



IRISH RESEARCH COUNCIL
An Chomhairle um Thaighde in Éirinn



CAROLINE
Collaborative Research Fellowships
for a Responsive and Innovative Europe



CAROLINE: Collaborative Research Fellowships for a Responsive and Innovative Europe
Marie Skłodowska-Curie Actions COFUND Grant Agreement no. 713279

Ana María Sánchez Rodríguez
Maynooth University

Scaling community social innovation to promote inclusion in the implementation of the SDGs: An international, interdisciplinary and intersectoral perspective on women and girls with disabilities

REA Site Visit 28th May 2018, Irish Research Council, Dublin

Outline

- Background

- Research Project

What is it about?

Home Host Organization and Main Partner Organization

Progress (October-March 2018)

- Training

- Expected impact

Background

- PhD Public Policy, UMass Boston (September 2011- May 2015)
- Field Work in Mexico- (August 2015-October 2016)
- PhD Dissertation Defence-UMass Boston (Feb 2017)
- Graduation- UMass Boston (May 2017)
- National Comprehensive System for the Protection of Children and Adolescents in Mexico-SIPINNA (April-September, 2017)
- Move to Lyon, France (October, 2017)

Research Project (1)

Exploring, analyzing and promoting effective community level innovations that can be **SCALED UP** to inform the development of national policies to implement the SDGs for persons with disabilities with a particular focus on women and girls with disabilities.

Research Project (2)



**Maynooth
University**

National University
of Ireland Maynooth



**handicap
international**
humanity & inclusion

Research Project (3)

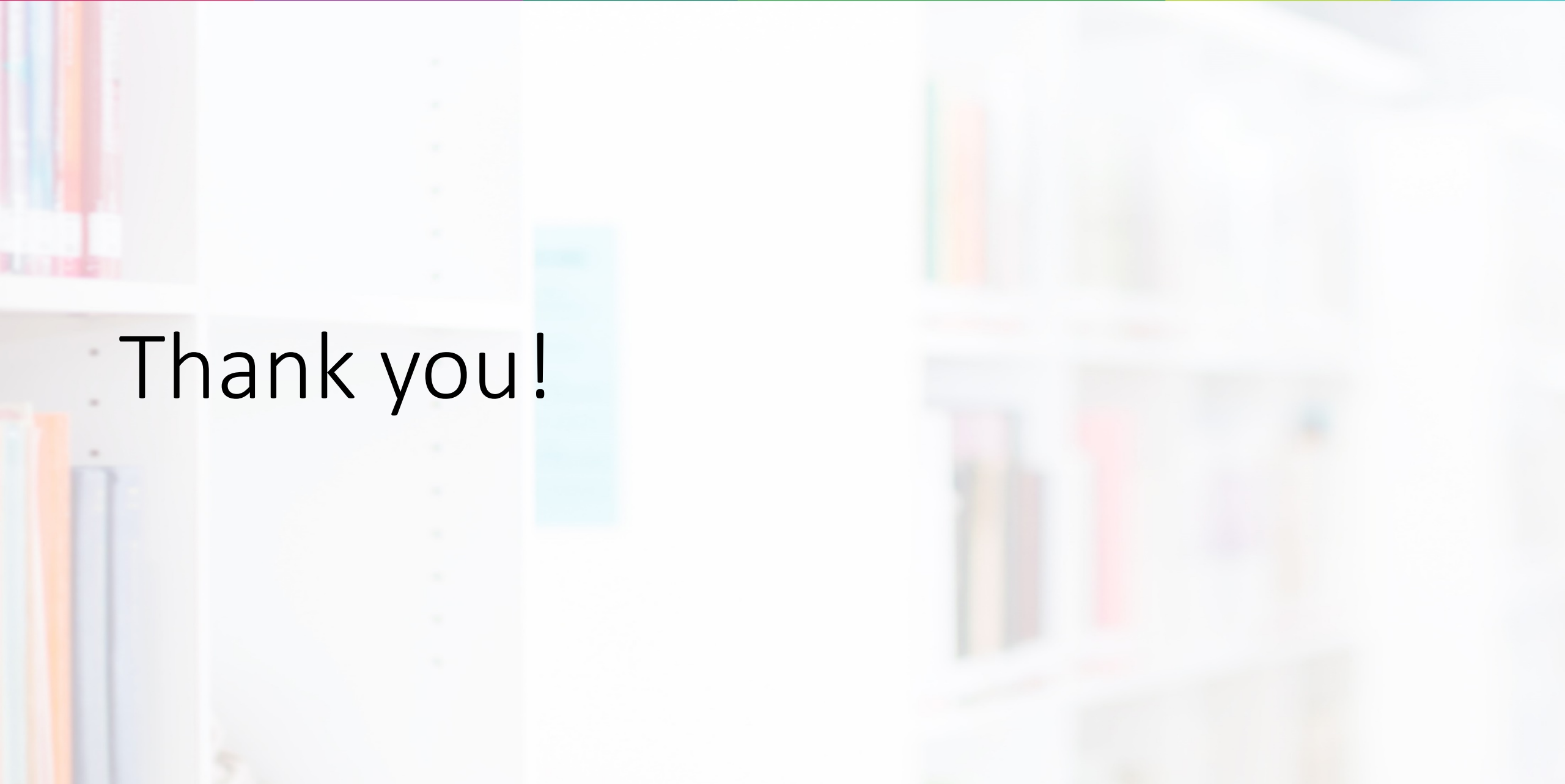
- Ethics approval
- Literature Review
- Travelling to research site- Lao PDR
- First Pilot Study
- Data Collection: 38 Interviews to representatives of DPOs, WROs, CSOs, Government and INGOs

Training (October-March 2018)

- First Training on the Making it Work Methodology- Kenya, Nairobi (March, 2018)
- Third Disability Forum (Lao-PDR, March 2018)
- Webinar participation in related topics
- Research Induction and Media training for Academics
- ALL Institute (Assistive Learning and Learning Institute) seminars

Expected Impact

- Leading position in a Research center
- Leading international projects to scaling up community level innovations that contribute to rights' realization of marginalized groups.
- Involving Actively in an international learning community of people working from different front lines to disseminate and think of better inclusive policies for marginalized communities in particular persons with disabilities.



Thank you!

